

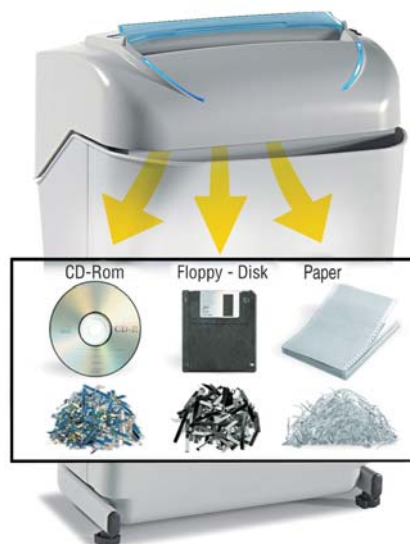
## Multipurpose and Multimedia "Energy Smart" shredder

**Manufacturer:** ELCOMAN S.R.L.  
**Brand:** KOBRA  
**Model:** KOBRA 240 SS4 TURBO E/S  
**Article code:** 99.706 E/S - 553

# KOBRA 240 SS4 TURBO



Throat width:	240 mm
Shred size:	3,8 mm. <b>straight cut</b>
Sheet capacity (A4/70 gr. paper):	28/30
Security Level DIN 32757:	2
"ENERGY SMART" management system:	yes
Speed:	0,09 m./sec.
Noise level (idle/shredding):	54/55 dba
Credit cards:	yes
CD-Rom:	yes
Floppy-Disk:	yes
Voltage:	230 V.
Power:	460 Watt
Dimensions (WxDxH):	37x33x56 cm.
Weight:	14 Kg.



Multipurpose and Multimedia straight cut shredder, equipped with "TURBO BOOST" system for **extra shredding capacity** and with "ENERGY SMART" system with optical illuminated indicators for **zero power consumption in Stand-by mode** and **environmental protection**.

- **24 hours continuous duty motor**
- Heavy duty chain drive with steel gears "SUPER POTENTIAL POWER UNIT"
- Automatic Start/Stop through electronic eyes with stand-by function
- Automatic Stop when waste bin is out with light signal
- Does not require plastic bags
- Carbon hardened cutting knives take staples and paper clips
- Convenient 35 liters removable waste bin equipped with a special mechanism to **separate shredded paper from plastic shreds** of credit cards, CD-Rom and Floppy-Disks
- Motor thermal protection
- Certification marks: CB – CSA – CE
- Manufacturer: Elcoman – Via Gorizia n° 9, 20030 Bovisio Masciago, (Milan) – Italy
- Packaging: 1 unit per box
- EAN Barcode 8 026064 007065



"TURBO BOOST" system:  
by pressing the Turbo switch the shredding capacity of the machine is increased to shred up to **30 sheets** in one pass



**Removable waste bin** with a special mechanism to **separate shredded paper from plastic shreds** of credit cards, CD-Rom and Floppy-Disks



"ENERGY SMART"  
Management system for **zero power consumption** in **Stand-by mode**